



desert conservation
PROGRAM
respect, protect and enjoy our desert!

Boulder City Conservation Easement Progress Update

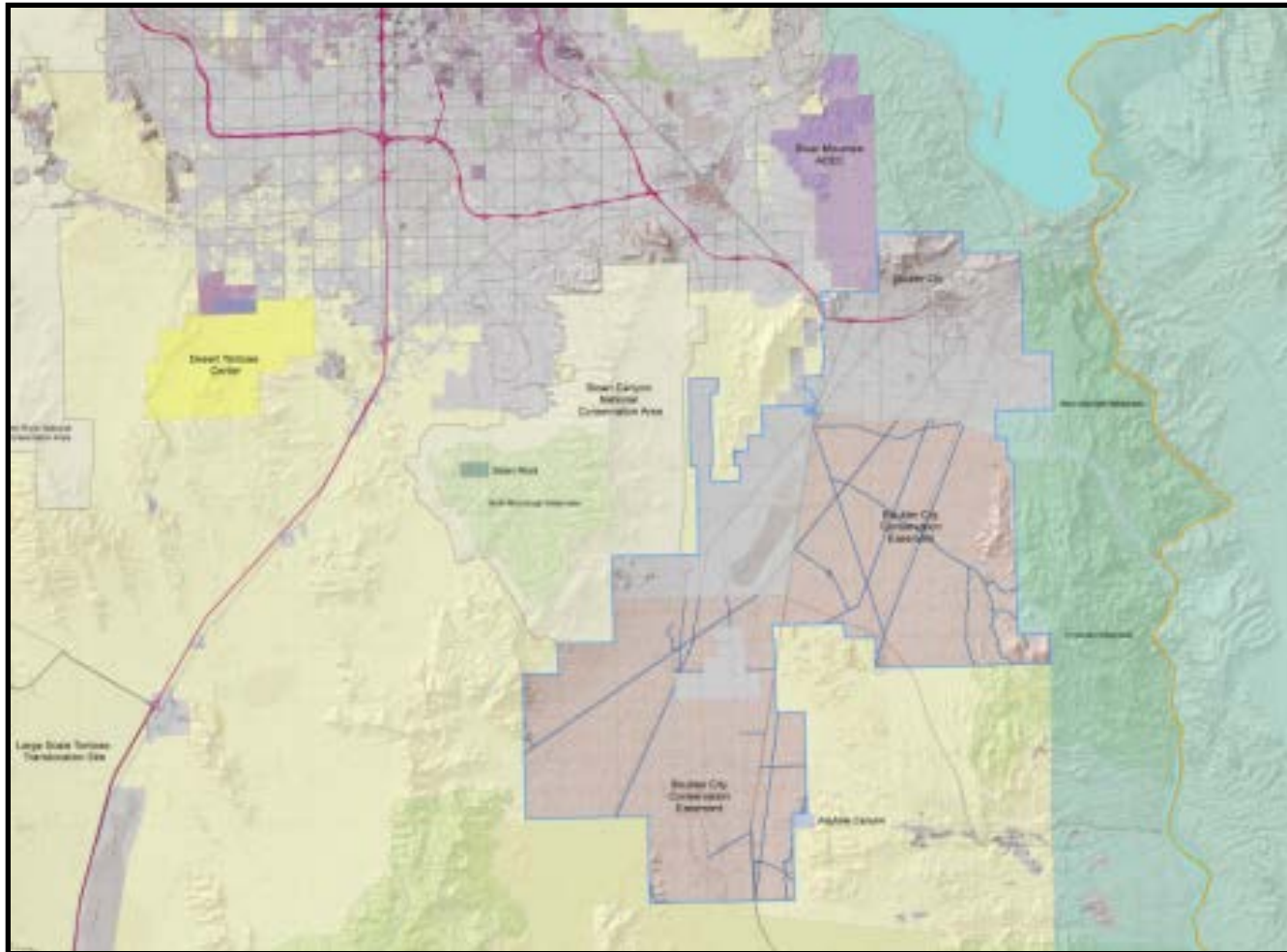
August 22, 2013



desert conservation PROGRAM

respect, protect and enjoy our desert!

Map





- Clark County purchased the easement in 1995 as a permit condition
- Purpose:
“...ensure that the property is retained in a natural condition, and to prevent any uses that will impair the conservation, protection, restoration and enhancement of the natural resource values, especially those values associated with habitat for the desert tortoise and other indigenous flora and fauna.”



- Approximately 86,423 acres
- Located southeast of Las Vegas
- Bisected by U.S. 95
- Energy Zone, substations and switching yards
- 58 Rights-of-way
 - Several BLM-claimed transmission corridors
- 95 miles of open roads
- Highly accessible to the public



- Adjacencies include:
 - Boulder City municipal development
 - BLM multiple use lands
 - BLM Piute-Eldorado ACEC and designated critical habitat for the desert tortoise
 - BLM Sloan Canyon NCA
 - NPS Lake Mead National Recreation Area



desert conservation
PROGRAM
respect, protect and enjoy our desert!

Ecosystems & Species

Ecosystem	Acres	Percent
Mesquite/Acacia	804	0.9
Mojave Desert Scrub	84,038	97.2
Salt Desert Scrub	1,277	1.5
Disturbed	324	0.4
<i>TOTAL</i>	<i>86,443</i>	



Covered Species Present:

- Desert tortoise (*Gopherus agassizii*)
- Desert iguana (*Dipsosaurus dorsalis*),
- Phainopepla (*Phainopepla nitens*)
- Mojave green rattlesnake (*Crotalus scutulatus scutulatus*)
- Speckled rattlesnake (*C. mitchelli*)
- Arizona bell's vireo (*Vireo bellii arizonae*)
- Many other sensitive plants and animals



- Roads and transportation
- Recreation
- Energy development and transmission
- Illegal & unauthorized activities
- Potentially – subsidized and invasive species



desert conservation PROGRAM

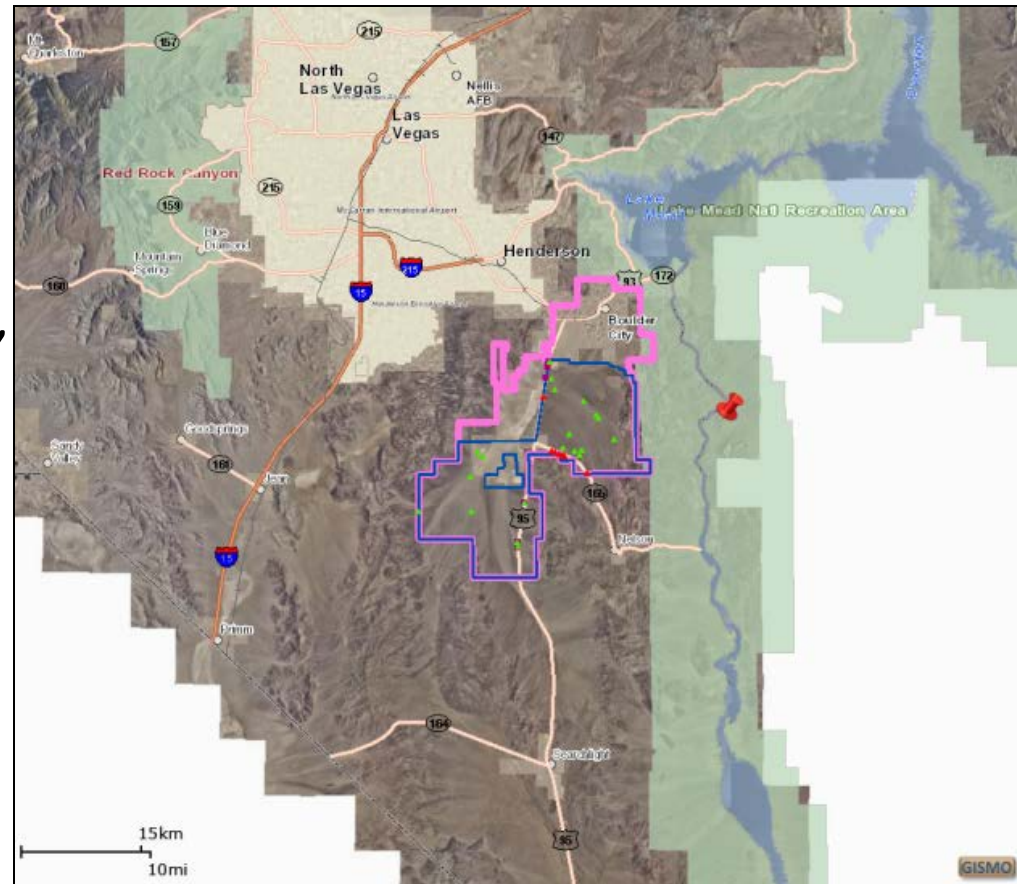
respect, protect and enjoy our desert!

Transportation Management





- Maintaining revised approach to signage for the BCCE
 - Only open roads on the BCCE are signed
 - All roads not signed as “open” are enforced as closed
 - Continued to maintain the network of signs and way finding by regularly monitoring, repairing or replacing removed, damaged or vandalized roads
- Continued to refine BCCE GIS applications



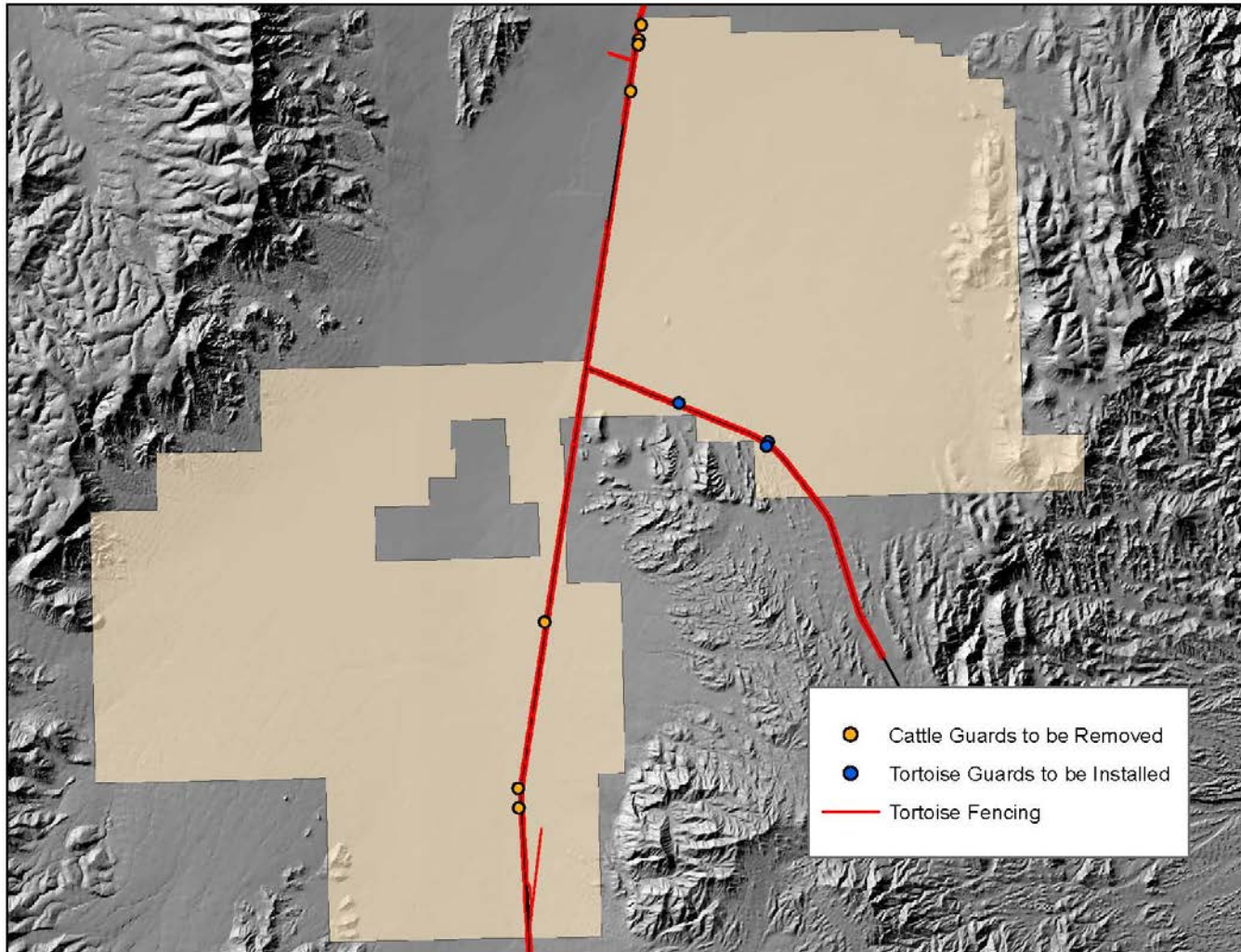


- June 2012 DCP staff initiated a monitoring project to collect data on open roads
- The purpose of the project is to determine the amount of traffic on selected roads within the BCCE
 - Data is helping guide management decisions such as patrol times and locations, restoration locations, etc.
- Project uses “TrafX” traffic counters
- Project also tracks traffic trends between the BCCE and adjacent BLM lands in the Piute-Eldorado Valley



desert conservation
PROGRAM
respect, protect and enjoy our desert!

Corralling Tortoises & People





desert conservation
PROGRAM
respect, protect and enjoy our desert!

Recreation Management





desert conservation
PROGRAM
respect, protect and enjoy our desert!

Recreation Management

- Motorized transportation is allowed on open, designated roads; 25 m.p.h.
- Passive recreation is allowed
- Camping, shooting, collection are prohibited
- Enforced through Boulder City ordinance and law enforcement



desert conservation
PROGRAM
respect, protect and enjoy our desert!

Law Enforcement

Purpose:

First: To inform and educate

Second: To cite when necessary



BCCE Patrol Statistics for Aug. 2012 to July 2013

		Contacts	Warnings	Citations	Miles	Hrs.	Brochures
1	Aug	6	1	0	2061	136	2
2	Sep	21	6	0	1982	144	10
3	Oct	3	2	0	2151	138	4
4	Nov	33	3	0	1695	132	9
5	Dec	19	4	0	2161	142	10
6	Jan	69	22	1	2020	140	42
7	Feb	60	28	0	1471	130	40
8	Mar	32	8	0	1788	150	27
9	Apr	49	17	0	1684	149	41
10	May	71	12	0	1667	139	55
11	Jun	55	13	0	1763	137	51
12	Jul	39	5	1	1608	145	28
TOTALS:		457	121	2	22051	1682	319



desert conservation
PROGRAM
respect, protect and enjoy our desert!

Restoration of Linear Disturbances

- 10 sites were restored



Before



After



desert conservation
PROGRAM
respect, protect and enjoy our desert!

Restoration of Linear Disturbances

- 10 sites were restored



Before



After



desert conservation
PROGRAM
respect, protect and enjoy our desert!

Renewable Energy Poster

- Check out the poster highlighting the pressures of renewable energy development on the BCCE.
- Partnership with Boulder City
- Meet with project proponents
- Make comments on projects to reduce impacts to the easement
- Monitoring construction activities



- Update of the BCCE Management Plan
- Phase II restoration of linear disturbances
- Weed inventory and treatment
- Installation of additional desert tortoise guards at select road openings to the BCCE
- Installation of additional desert tortoise barriers
- Design and installation of informational kiosk at key access point to the BCCE from Boulder City
- Research into possible threats from ravens and other predators



desert conservation
PROGRAM
respect, protect and enjoy our desert!

Questions?